

PARTS CATALOG

DADF-M1

Canon

Mar 17 2004

PREFACE

This Parts Catalog contains listings of parts used

Diagrams are provided with the listings to aid the service technician in identifying clearly, the item to be ordered.

Whenever ordering parts, consult this Parts Catalog for all of the information pertaining to each item. Be sure to include, in the Parts Request, the full item description, the item part number, and the quantity.

COPYRIGHT (C) 1999 CANON INC.

Use of this manual should be strictly supervised to avoid disclosure of confidential information.

Contents

Parts List Index

DADF-M1	1-1
---------------	-----

DADF-M1

PA	ASSEMBLY LOCATION DIAGRAM	2-1
P11	INTERNAL COMPONENTS	2-3
P12	DOCUMENT TRAY ASSEMBLY	2-6
P31	OPEN/CLOSE PANEL ASSEMBLY	2-8
P41	PAPER FEEDER ASSEMBLY	2-10
P90	ADF CONTROLLER PCB ASSEMBLY	2-18
PB	LIST OF CONNECTORS	2-19

NUMERICAL INDEX

DADF-M1

PARTS NUMBER	FIGURE & KEY NO.	PARTS NUMBER	FIGURE & KEY NO.	PARTS NUMBER	FIGURE & KEY NO.
FC3-0722-000	P41 - 104	FC5-3025-000	P31 - 13	FC5-3226-000	P11 - 16
FC5-2953-000	P31 - 1	FC5-3026-000	P41 - 68	FC5-4424-000	P41 - 19
FC5-2954-000	P31 - 24	FC5-3102-000	P11 - 3	FC5-4425-000	P41 - 58
FC5-2956-000	P31 - 2	FC5-3106-000	P12 - 2	FH2-6483-000	PB - J305
FC5-2957-000	P31 - 3	FC5-3108-000	P12 - 4	FK2-0204-000	P41 - 118
FC5-2958-000	P31 - 4	FC5-3111-000	P12 - 5	FK2-0205-000	P41 - 98
FC5-2959-000	P31 - 20	FC5-3113-000	P12 - 6	FK2-0207-000	P41 - 86
FC5-2960-000	P31 - 21	FC5-3114-000	P41 - 105	FK2-0208-000	P41 - 131
FC5-2961-000	P31 - 19	FC5-3115-000	P41 - 106	FK2-0209-000	P41 - 127
FC5-2962-000	P31 - 16	FC5-3116-000	P41 - 107	FK2-0210-000	P41 - 84
FC5-2963-000	P31 - 5	FC5-3118-000	P41 - 108	FK2-0212-000	PB - J305
FC5-2967-000	P41 - 85	FC5-3119-000	P41 - 109	FK2-0213-000	PB - J305
FC5-2975-000	P41 - 82	FC5-3120-000	P41 - 110	FK2-0214-000	PB - J305
FC5-2978-000	P41 - 76	FC5-3121-000	P41 - 111	FK2-0217-000	P41 - 129
FC5-2979-000	P41 - 77	FC5-3124-000	P41 - 112	FL2-0725-000	P11 - 8
FC5-2980-000	P41 - 1	FC5-3128-000	P41 - 101	FL2-0726-000	P11 - 9
FC5-2987-000	P41 - 64	FC5-3129-000	P41 - 102	FL2-0727-000	P11 - 10
FC5-2988-000	P41 - 65	FC5-3130-000	P41 - 103	FL2-0728-000	P11 - 11
FC5-2989-000	P41 - 72	FC5-3137-000	P12 - 7	FL2-0730-000	P41 - 20
FC5-2990-000	P41 - 73	FC5-3144-000	P41 - 10	FL2-0731-000	P41 - 21
FC5-2991-000	P41 - 2	FC5-3145-000	P41 - 11	FL2-0732-000	P41 - 22
FC5-2992-000	P41 - 3	FC5-3146-000	P41 - 12	FL2-0733-000	P31 - 7
FC5-2994-000	P41 - 4	FC5-3147-000	P41 - 13	FL2-0734-000	P31 - 8
FC5-2995-000	P41 - 5	FC5-3148-000	P41 - 14	FL2-0735-000	P12 - 8
FC5-2996-000	P41 - 6	FC5-3149-000	P41 - 92	FL2-0736-000	P12 - 9
FC5-2997-000	P41 - 51	FC5-3150-000	P41 - 93	FL2-0737-000	P41 - 44
FC5-2998-000	P41 - 7	FC5-3152-000	P41 - 95	FL2-0741-000	P41 - 69
FC5-3000-000	P41 - 52	FC5-3153-000	P41 - 136	FL2-0742-000	P41 - 79
FC5-3002-000	P41 - 53	FC5-3154-000	P41 - 16	FL2-0747-000	P41 - 133
FC5-3004-000	P41 - 54	FC5-3163-000	P41 - 117	FL2-0748-000	P41 - 137
FC5-3006-000	P41 - 55	FC5-3165-000	P41 - 121	FL2-0749-000	P41 - 138
FC5-3007-000	P41 - 56	FC5-3166-000	P41 - 122	FL2-0753-000	P41 - 59
FC5-3008-000	P41 - 8	FC5-3167-000	P41 - 123	FL2-0754-000	P41 - 60
FC5-3009-000	P41 - 132	FC5-3168-000	P41 - 124	FL2-1298-000	P41 - 61
FC5-3010-000	P41 - 9	FC5-3169-000	P41 - 125	FL2-1299-000	P41 - 113
FC5-3014-000	P31 - 6	FC5-3170-000	P41 - 126	FL2-1301-000	P41 - 45
FC5-3015-000	P11 - 1	FC5-3177-000	P41 - 17	FL2-1302-000	P41 - 94
FC5-3016-000	P31 - 22	FC5-3202-000	P11 - 4	FL2-1303-000	P11 - 5
FC5-3017-000	P31 - 23	FC5-3211-000	P11 - 13	FL2-1304-000	P12 - 3
FC5-3019-000	P41 - 57	FC5-3212-000	P11 - 14	FM2-0678-000	P31 -
FC5-3020-000	P41 - 78	FC5-3214-000	P11 - 6	FM2-0679-000	P12 -
FC5-3021-000	P41 - 66	FC5-3218-000	P41 - 43	FM2-0696-000	P12 - 11
FC5-3022-000	P41 - 74	FC5-3221-000	P11 - 15	FM2-1021-000	P90 -
FC5-3024-000	P41 - 67	FC5-3225-000	P41 - 18	FM2-1022-000	P41 - 81

NUMERICAL INDEX

DADF-M1

PARTS NUMBER	FIGURE & KEY NO.	PARTS NUMBER	FIGURE & KEY NO.	PARTS NUMBER	FIGURE & KEY NO
FM2-1023-000	P41 - 100	FU5-6073-000	P41 - 135	VS1-5824-006	PB - J302
FM2-1024-000	P12 - 13	FU5-6074-000	P31 - 17	VS1-5824-007	PB - J4
FM2-1026-000	P41 - 83	FU5-6075-000	P31 - 14	VS1-5824-008	PB - J5
FM2-1028-000	P11 - 18	FU5-6076-000	P41 - 70	VS1-5824-009	PB - J3
FM2-1029-000	P41 - 71	FU5-6077-000	P41 - 75	VS1-6313-008	PB - J1
FM2-1031-000	P12 - 1	FU5-6078-000	P41 - 63	VS1-6314-003	PB - J14
FM2-1032-000	P11 - 20	FU5-6079-000	P31 - 15	VS1-6314-008	PB - J1
FM2-1034-000	P11 - 21	NPN	P11 -	VS1-6314-012	PB - J2
FM2-1035-000	P31 - 18	NPN	P41 -	VS1-6320-003	PB - J202
FS1-9003-000	P41 - 23	NPN	PB -	VS1-6321-002	PB - J111
FS2-1052-000	P41 - 24	NPN	PB - J8	VS1-6321-003	PB - J102
FSS-1605-000	P41 - 25	NPN	PB - J11	VS1-6321-003	PB - J203
FU5-0328-000	P41 - 130	NPN	PB - J12	VS1-6321-003	PB - J204
FU5-0329-000	P41 - 87	NPN	PB - J102	VS1-6321-003	PB - J1401
FU5-0330-000	P41 - 88	NPN	PB - J203	VS1-6321-004	PB - J101
FU5-0331-000	P41 - 26	NPN	PB - J204	VS1-6321-004	PB - J112
FU5-0332-000	P41 - 27	NPN	PB - J301	VS1-6321-004	PB - J201
FU5-0333-000	P41 - 28	NPN	PB - J311	VS1-7176-002	P41 - 50
FU5-0334-000	P41 - 29	NPN	PB - J312	VS1-7176-002	PB - J901
FU5-0335-000	P41 - 30	NPN	PB - J901	VS1-7177-002	P11 - 22
FU5-0336-000	P41 - 31	NPN	PB - J902	VS1-7177-002	P41 - 48
FU5-0338-000	P41 - 32	NPN	PB - J1001	VS1-7177-002	PB - J111
FU5-0339-000	P41 - 46	NPN	PB - J1002	VS1-7177-002	PB - J1001
FU5-0340-000	P41 - 33	NPN	PB - J1401	VS1-7177-003	P12 - 14
FU5-0341-000	P41 - 62	PCB	PB - J1	VS1-7177-003	P41 - 15
FU5-0342-000	P12 - 12	PCB	PB - J2	VS1-7177-003	PB - J301
FU5-0343-000	P41 - 114	PCB	PB - J3	VS1-7177-003	PB - J1401
FU5-0344-000	P41 - 119	PCB	PB - J4	VS1-7177-004	P41 - 89
FU5-0345-000	P41 - 128	PCB	PB - J5	VS1-7177-004	PB - J101
FU5-0346-000	P41 - 34	PCB	PB - J6	VS1-7177-004	PB - J902
FU5-2234-000	P31 - 9	PCB	PB - J8	VS1-7177-006	P11 - 7
FU5-2235-000	P31 - 10	PCB	PB - J9	VS1-7177-006	P12 - 15
FU5-2236-000	P31 - 11	PCB	PB - J10	VS1-7177-006	PB - J302
FU5-2237-000	P41 - 99	PCB	PB - J11	VS1-7177-006	PB - J1002
FU5-2238-000	P41 - 134	PCB	PB - J12	VS1-7178-002	PB - J901
FU5-2240-000	P41 - 80	PCB	PB - J14	VS1-7178-002	PB - J1001
FU5-2244-000	P41 - 115	PCB	PB - J101	VS1-7178-003	PB - J311
FU5-2245-000	P41 - 96	PCB	PB - J112	VS1-7178-003	PB - J1401
FU5-2247-000	P41 - 35	PCB	PB - J201	VS1-7178-004	PB - J101
FU5-2248-000	P41 - 36	PCB	PB - J202	VS1-7178-004	PB - J902
FU5-2249-000	P41 - 37	SYS	PB - J111	VS1-7178-006	PB - J9
FU5-2250-000	P31 - 12	SYS	PB - J305	VS1-7178-006	PB - J302
FU5-2251-000	P41 - 97	VS1-0852-003	PB - J312	VS1-7178-006	PB - J1002
FU5-6073-000	P11 - 17	VS1-5824-003	PB - J301	VS1-7178-008	PB - J10

NUMERICAL INDEX

DADF-M1

PARTS NUMBER	FIGURE & KEY NO.	PARTS NUMBER	FIGURE & KEY NO.	PARTS NUMBER	FIGURE & KEY NO.
VS3-5080-007	PB - J305	XF2-1106-140	P41 - 116		
VS3-5080-008	PB - J305	XF2-1106-540	P41 - 91		
VS3-5083-002	PB - J6	XF2-1108-040	P41 - 39		
VT2-5161-016	PB - J1	XF2-1108-560	P41 - 120		
WE8-5256-000	P11 - 2	XF2-1108-860	P41 - 40		
WG8-5593-000	P12 - 10	XF9-0746-000	P41 - 41		
WG8-5593-000	P41 - 90	XF9-0747-000	P41 - 47		
WS3-5044-000	PB - J305	XG9-0237-000	P41 - 42		
WS3-5160-000	PB - J6				
WS3-5358-000	PB - J3				
WS3-5358-000	PB - J4				
WS3-5358-000	PB - J5				
WS3-5358-000	PB - J301				
WS3-5358-000	PB - J302				
WT1-5155-000	PB - J305				
WT2-5565-000	P11 - 19				
WT2-5565-000	P41 - 49				
XA9-1031-000	P11 - 12				
XA9-1031-000	P41 - 38				
XB1-1301-209	P41 - 510				
XB1-2300-605	P11 - 501				
XB1-2300-605	P31 - 501				
XB1-2300-605	P41 - 501				
XB1-2400-607	P11 - 506				
XB1-2400-607	P41 - 513				
XB4-5300-809	P31 - 502				
XB4-5400-805	P11 - 502				
XB4-5400-805	P41 - 511				
XB4-5401-205	P11 - 503				
XB4-7300-805	P12 - 501				
XB4-7300-805	P41 - 506				
XB4-7401-005	P12 - 502				
XB6-7300-605	P11 - 505				
XB6-7300-605	P41 - 512				
XD2-1100-242	P41 - 507				
XD2-1100-322	P41 - 502				
XD2-1100-402	P31 - 503				
XD2-1100-402	P41 - 503				
XD2-1100-502	P11 - 504				
XD2-1100-502	P31 - 504				
XD2-1100-502	P41 - 504				
XD2-1100-642	P41 - 505				
XD3-2200-102	P41 - 509				
XD3-2200-122	P41 - 508				

DADF-M1

F26-2201-000

F26-2211-000

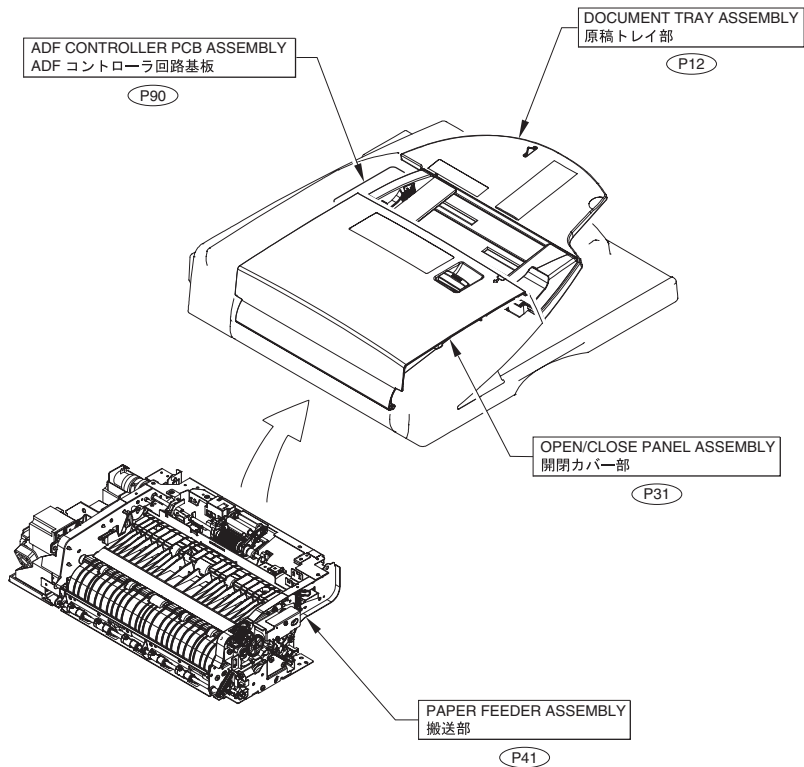
F26-2221-000

F26-2231-000

Contents

PA	ASSEMBLY LOCATION DIAGRAM	2-1
P11	INTERNAL COMPONENTS	2-3
P12	DOCUMENT TRAY ASSEMBLY	2-6
P31	OPEN/CLOSE PANEL ASSEMBLY	2-8
P41	PAPER FEEDER ASSEMBLY	2-10
P90	ADF CONTROLLER PCB ASSEMBLY	2-18
PB	LIST OF CONNECTORS	2-19

FIGURE PA ASSEMBLY LOCATION DIAGRAM



OPTIONS

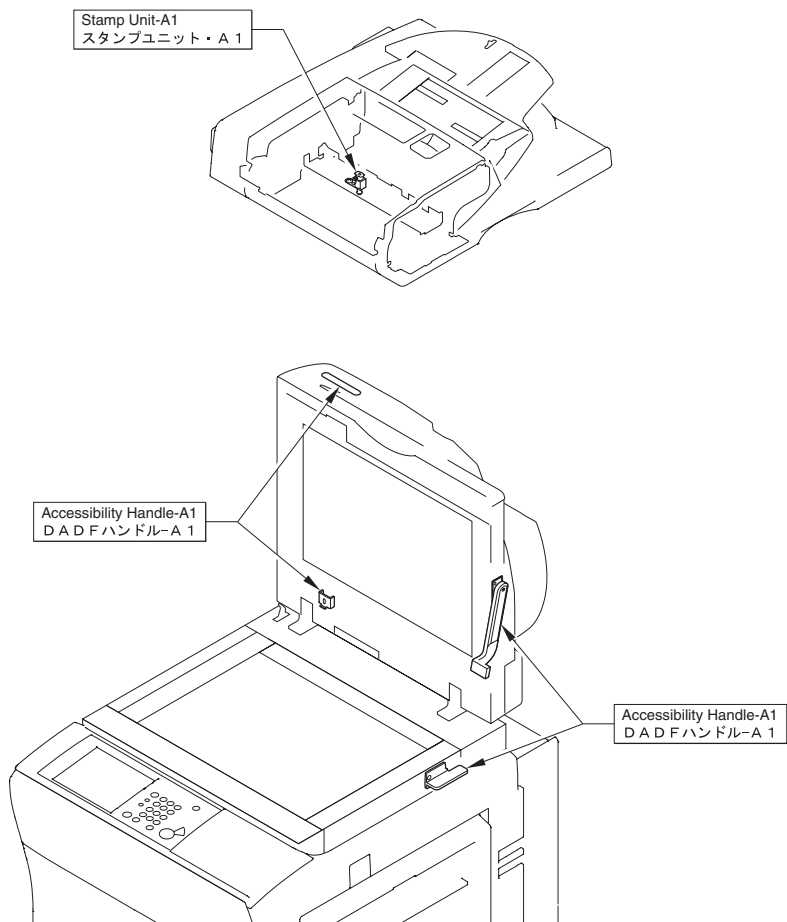
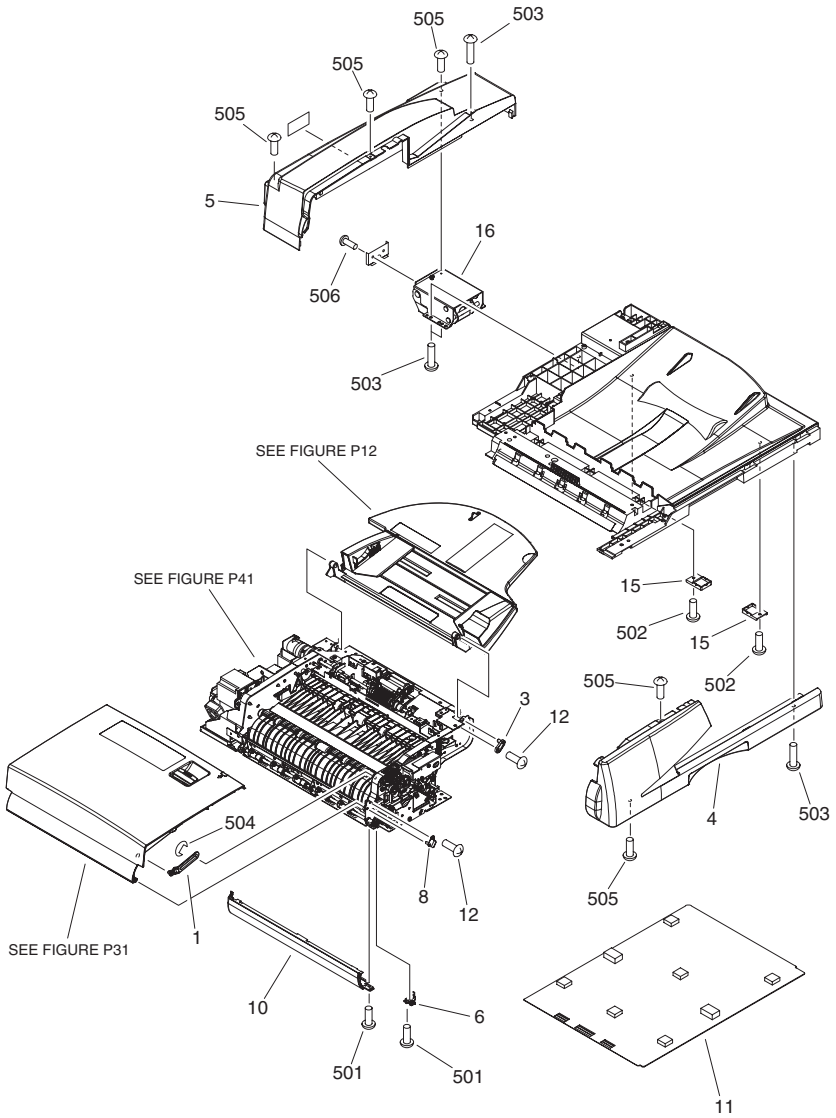


FIGURE P11 INTERNAL COMPONENTS



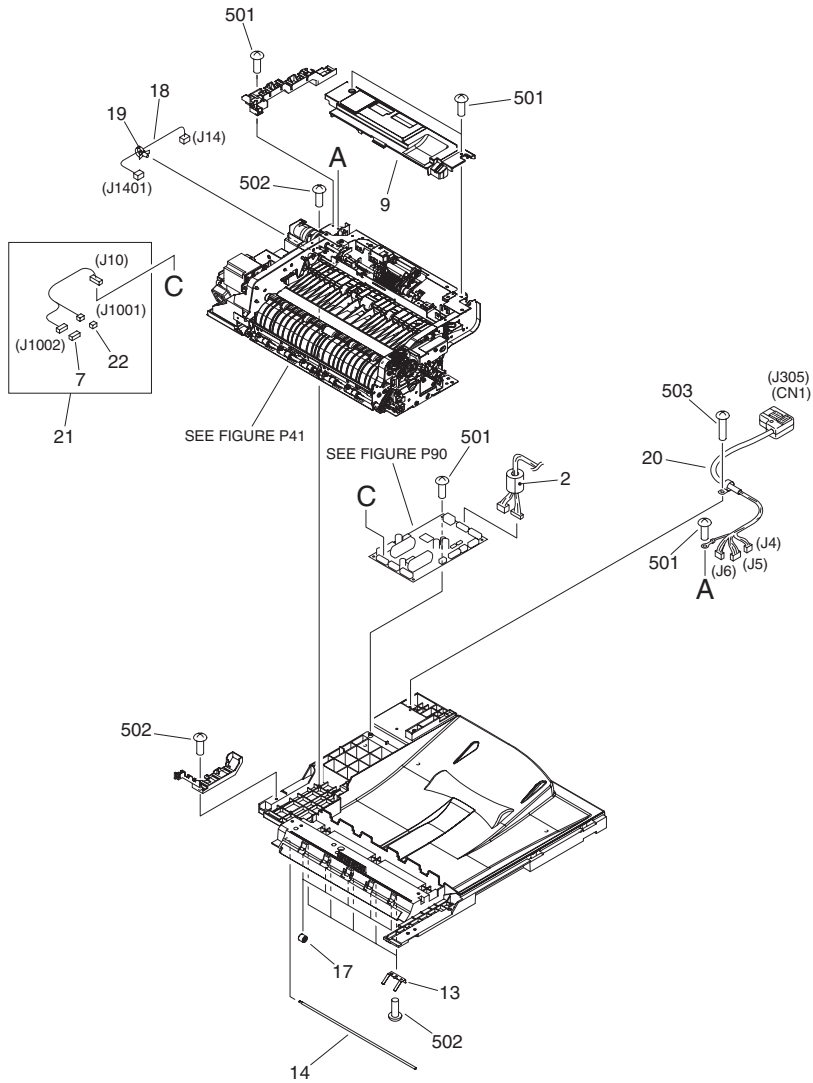


FIGURE & KEY NO.	PARTS NUMBER	RANK	Q'TY	DESCRIPTION	SERIAL NUMBER/REMARKS	SVC
Fig.P11	NPN		RF	INTERNAL COMPONENTS		
1	FC5-3015-000		1	ARM, OPEN/CLOSE PANEL STOPPER		
2	WE8-5256-000		1	CLAMP, FERRITE		
3	FC5-3102-000		1	PIN, POSITIONING		
4	FC5-3202-000		1	PANEL, FRONT		
5	FL2-1303-000		1	PANEL, REAR		
6	FC5-3214-000		1	BLOCK, HEIGHT		
7	VS1-7177-006		1	CONNECTOR, SNAP TIGHT, BK	J1002	
8	FL2-0725-000		1	PLATE, OPEN/CLOSE SHAFT		
9	FL2-0726-000		1	PANEL, CENTER		
10	FL2-0727-000		1	PANEL, SIDE		
11	FL2-0728-000		1	PANEL, COPYBOARD		
12	XA9-1031-000		7	SCREW,MACH.,TRUSS HEAD,M4X8		
13	FC5-3211-000		5	SPRING, LEAF		
14	FC5-3212-000		1	SHAFT, PAPER READ ROLLER		
15	FC5-3221-000		2	SUPPORT, COPYBOARD PANEL		
16	FC5-3226-000		1	HINGE, RIGHT		
17	FU5-6073-000		5	ROLLER, FEED		
18	FM2-1028-000		1	CABLE, REGISTRATION SENSOR	J14,1401	
19	WT2-5565-000		1	CLAMP, CABLE		
20	FM2-1032-000		1	CABLE, INTERFACE	CN1 J305 J4-6	
21	FM2-1034-000		1	CABLE, MOTOR/CLUTCH CONNECTING	J10,1001,1002	
22	VS1-7177-002		1	CONNECTOR, SNAP TIGHT, BK	J1001	
501	XB1-2300-605		1			
502	XB4-5400-805		AR	SCREW,P,M4X8		
503	XB4-5401-205		AR	SCREW,P,M4X12		
504	XD2-1100-502		1			
505	XB6-7300-605		AR	SCREW,TP,M3X6		
506	XB1-2400-607		AR	SCREW,MACH.,TRUSS HEAD,M4X6		

FIGURE P12 DOCUMENT TRAY ASSEMBLY

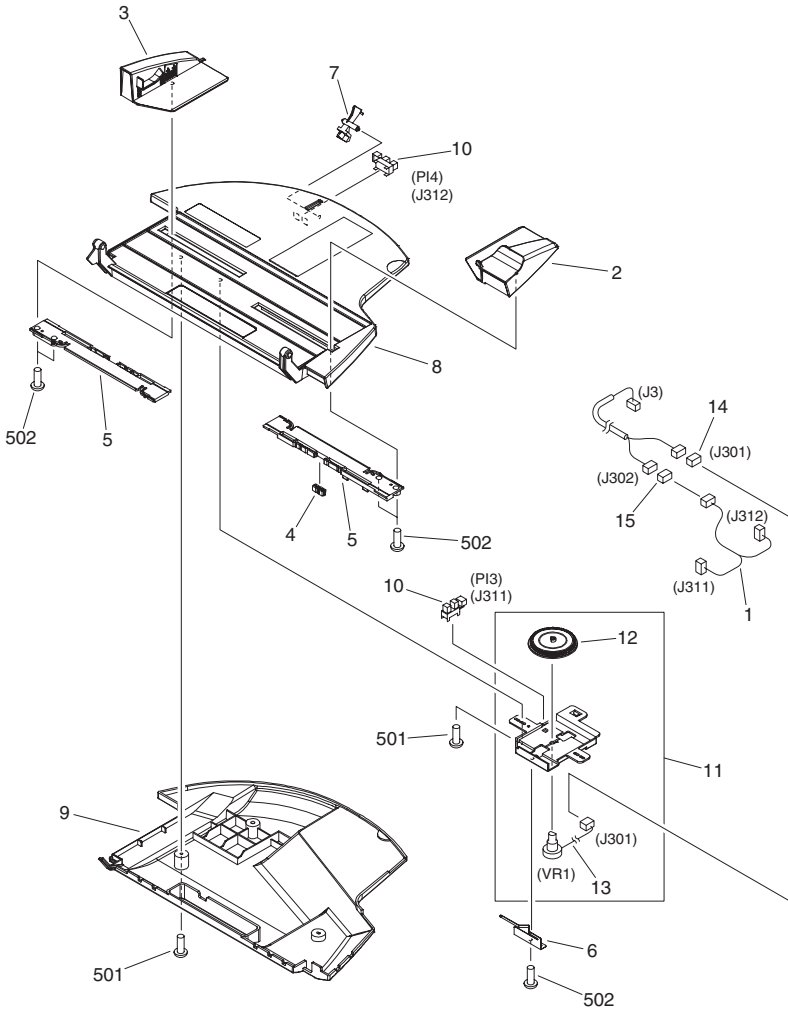


FIGURE & KEY NO.	PARTS NUMBER	RANK	Q'TY	DESCRIPTION	SERIAL NUMBER/REMARKS	SVC
Fig.P12	FM2-0679-000		1	DOCUMENT TRAY ASSEMBLY		
1	FM2-1031-000		1	CABLE, DOCUMENT TRAY CONNECT	J302,311,312	
2	FC5-3106-000		1	GUIDE, DOCUMENT SIDE, FRONT		
3	FL2-1304-000		1	GUIDE, DOCUMENT SIDE, REAR		
4	FC5-3108-000		1	RACK		
5	FC5-3111-000		2	RACK, DOCUMENT SIDE GUIDE		
6	FC5-3113-000		1	SPRING, LEAF		
7	FC5-3137-000		1	FLAG, DOCUMENT LENGTH SENSOR		
8	FL2-0735-000		1	TRAY, DOCUMENT, UPPER		
9	FL2-0736-000		1	TRAY, DOCUMENT, LOWER		
10	WG8-5593-000		2	PHOTO INTERRUPTER TLP1242	PI3,4 J311,312	
11	FM2-0696-000		1	VOLUME HOLDER ASSEMBLY		
12	FU5-0342-000		1	GEAR, 68T		
13	FM2-1024-000		1	VARIABLE RESISTOR UNIT	VR1 J301	
14	VS1-7177-003		1	CONNECTOR, SNAP TIGHT, BK	J301	
15	VS1-7177-006		1	CONNECTOR, SNAP TIGHT, BK	J302	
501	XB4-7300-805		AR	SCREW,TAPPING,TRUSS HEAD,M3X8		
502	XB4-7401-005		AR	SCREW,TAPPING,TRUSS HEAD,M4X10		

FIGURE P31 OPEN/CLOSE PANEL ASSEMBLY

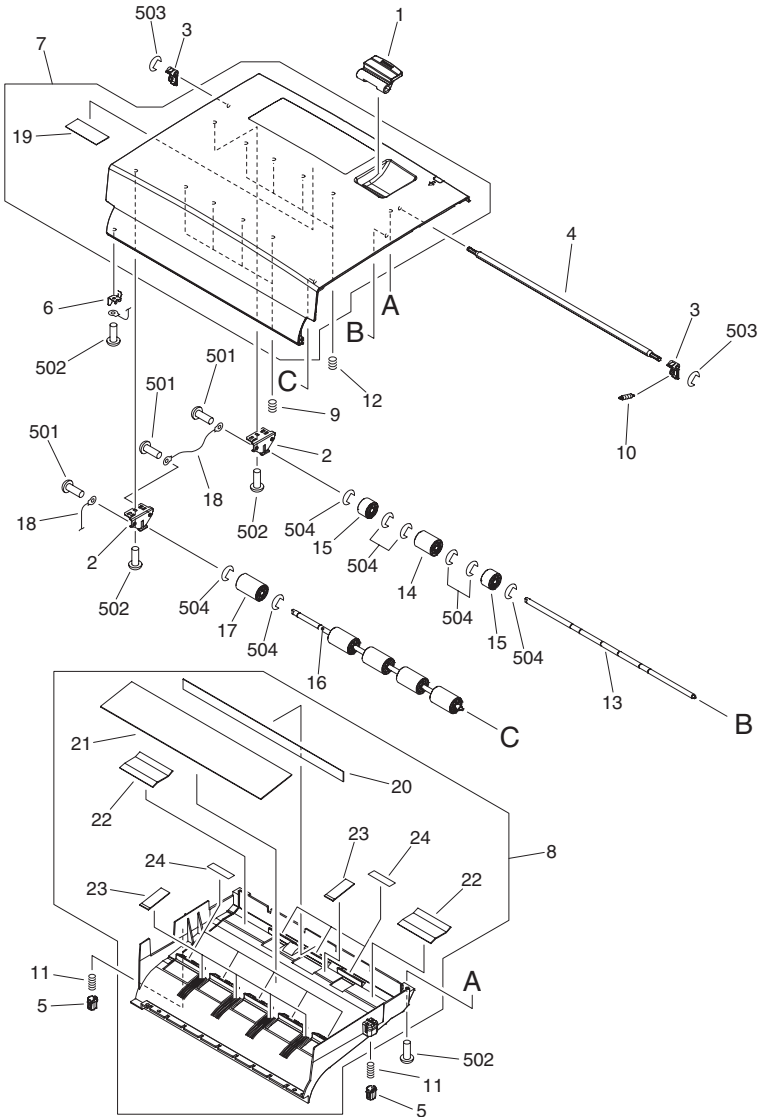
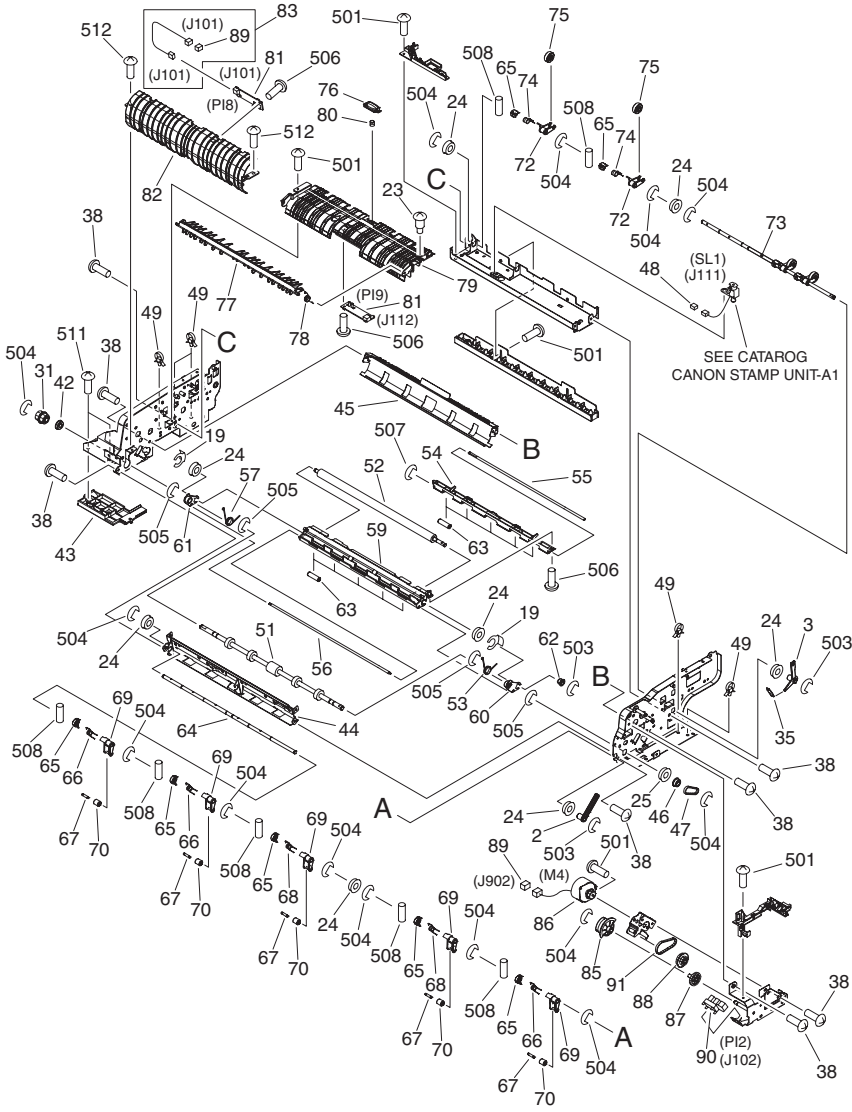
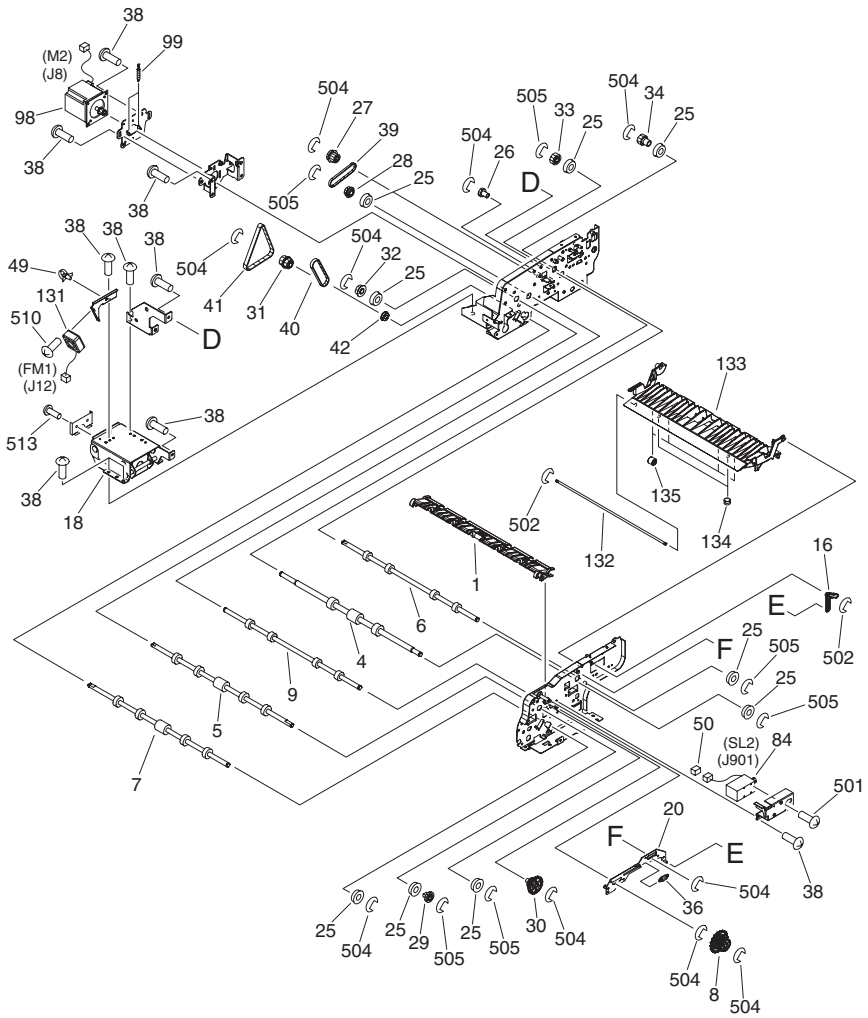


FIGURE & KEY NO.	PARTS NUMBER	R A N K	Q'TY	DESCRIPTION	SERIAL NUMBER/ REMARKS	S V C
Fig.P31	FM2-0678-000		1	OPEN/CLOSE PANEL ASSEMBLY		
1	FC5-2953-000		1	LEVER, OPEN/CLOSE		
2	FC5-2956-000		2	PLATE, REGISTRATION ADJUSTMENT		
3	FC5-2957-000		2	LEVER, LATCH		
4	FC5-2958-000		1	SHAFT, LATCH		
5	FC5-2963-000		2	RETAINER, OPEN/CLOSE GUIDE		
6	FC5-3014-000		1	SPRING, LEAF		
7	FL2-0733-000		1	PANEL, OPEN/CLOSE		
8	FL2-0734-000		1	GUIDE, OPEN/CLOSE		
9	FU5-2234-000		4	SPRING, COMPRESSION		
10	FU5-2235-000		1	SPRING, TENSION		
11	FU5-2236-000		2	SPRING, COMPRESSION		
12	FU5-2250-000		4	SPRING, COMPRESSION		
13	FC5-3025-000		1	SHAFT, REGISTRATION ROLLER, 1		
14	FU5-6075-000		1	ROLLER, REGISTRATION, 1		
15	FU5-6079-000		2	ROLLER, REGISTRATION, 2		
16	FC5-2962-000		1	SHAFT, REGISTRATION ROLLER, 2		
17	FU5-6074-000		5	ROLLER, REGISTRATION, 3		
18	FM2-1035-000		2	WIRE, GROUNDING		
19	FC5-2961-000		1	SHEET, CLEANING		
20	FC5-2959-000		1	SHEET, CLEANING		
21	FC5-2960-000		1	SHEET, CLEANING		
22	FC5-3016-000		2	SHEET, CLEANING		
23	FC5-3017-000		5	SHEET, CLEANING		
24	FC5-2954-000		8	SCRAPER		
501	XB1-2300-605		1			
502	XB4-5300-809		AR	SCREW,P,M3X8		
503	XD2-1100-402		AR	RING,E		
504	XD2-1100-502		1			

FIGURE P41 PAPER FEEDER ASSEMBLY





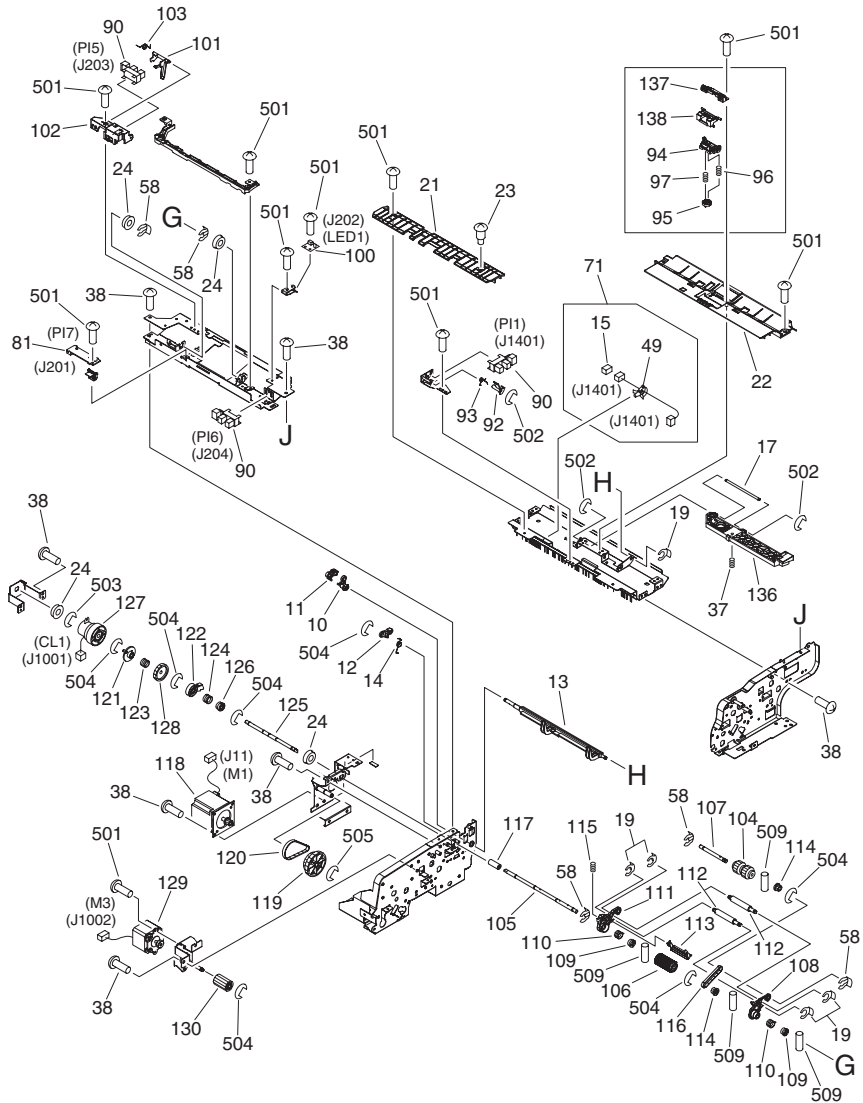


FIGURE & KEY NO.	PARTS NUMBER	R A N K	Q'TY	DESCRIPTION	SERIAL NUMBER/ REMARKS	S V C
Fig.P41	NPN		RF	PAPER FEEDER ASSEMBLY		
1	FC5-2980-000		1	GUIDE, REVERSE		
2	FC5-2991-000		1	ARM, RELEASE		
3	FC5-2992-000		1	ARM, RELEASE		
4	FC5-2994-000		1	ROLLER, REGISTRATION, 1		
5	FC5-2995-000		1	ROLLER, REGISTRATION, 2		
6	FC5-2996-000		1	ROLLER, PAPER DELIVERY		
7	FC5-2998-000		1	ROLLER, PAPER READ		
8	FC5-3008-000		1	KNOB, JAM CLEARING		
9	FC5-3010-000		1	ROLLER, PAPER FEEDER		
10	FC5-3144-000		1	LEVER, LOCK		
11	FC5-3145-000		1	LEVER, LOCK		
12	FC5-3146-000		1	LEVER, LOCK		
13	FC5-3147-000		1	SHUTTER, DOCUMENT		
14	FC5-3148-000		1	SPRING, TORSION		
15	VS1-7177-003		1	CONNECTOR, SNAP TIGHT, BK	J1401	
16	FC5-3154-000		1	LINK, PRESSURE RELEASE		
17	FC5-3177-000		1	SHAFT, PRESSURE RELEASE LINK		
18	FC5-3225-000		1	HINGE, LEFT		
19	FC5-4424-000		7	CLIP		
20	FL2-0730-000		1	LINK, PRESSURE RELEASE		
21	FL2-0731-000		1	GUIDE, REGISTRATION		
22	FL2-0732-000		1	GUIDE, SEPARATION LOWER		
23	FS1-9003-000		2	SCREW, STEPPED, M4		
24	FS2-1052-000		12	BUSHING		
25	FS5-1605-000		10	BUSHING		
26	FU5-0331-000		1	GEAR, 18T		
27	FU5-0332-000		1	GEAR, 24T/PULLEY, 28T		
28	FU5-0333-000		1	PULLEY, 28T		
29	FU5-0334-000		1	GEAR, 24T		
30	FU5-0335-000		1	GEAR, 42T/24T		
31	FU5-0336-000		2	PULLEY, 30T		

FIGURE & KEY NO.	PARTS NUMBER	R A N K	Q'TY	DESCRIPTION	SERIAL NUMBER/ REMARKS	S V C
32	FU5-0338-000		1	PULLEY, 30T		
33	FU5-0340-000		1	GEAR, 24T		
34	FU5-0346-000		1	GEAR, 22T		
35	FU5-2247-000		1	SPRING, TENSION		
36	FU5-2248-000		1	SPRING, TENSION		
37	FU5-2249-000		1	SPRING, COMPRESSION		
38	XA9-1031-000		51	SCREW,MACH.,TRUSS HEAD,M4X8		
39	XF2-1108-040		1	BELT, TIMING		
40	XF2-1108-860		1	BELT, TIMING, COGGED		
41	XF9-0746-000		1	BELT, TIMING, COGGED		
42	XG9-0237-000		2	BEARING, BALL		
43	FC5-3218-000		1	COVER, PAPER FEEDER FRAME		
44	FL2-0737-000		1	GUIDE, PAPER FEEDER, 1		
45	FL2-1301-000		1	GUIDE, PAPER FEEDER, 2		
46	FU5-0339-000		1	PULLEY, 23T		
47	XF9-0747-000		1	BELT, TIMING, COGGED		
48	VS1-7177-002		1	CONNECTOR, SNAP TIGHT, BK	J111	
49	WT2-5565-000		7	CLAMP, CABLE		
50	VS1-7176-002		1	CONNECTOR, SNAP TIGHT, BK	J901	
51	FC5-2997-000		1	ROLLER, PAPER READ		
52	FC5-3000-000		1	ROLLER, PLATEN		
53	FC5-3002-000		1	SPRING, TORSION		
54	FC5-3004-000		1	GUIDE, PLATEN, 2		
55	FC5-3006-000		1	SHAFT, PLATEN ROLLER, 1		
56	FC5-3007-000		1	SHAFT, PLATEN ROLLER, 2		
57	FC5-3019-000		1	SPRING, TORSION		
58	FC5-4425-000		5	CLIP		
59	FL2-0753-000		1	GUIDE, PLATEN, 1		
60	FL2-0754-000		1	ARM, SWING BUSHING, FRONT		
61	FL2-1298-000		1	ARM, SWING BUSHING, REAR		
62	FU5-0341-000		1	PULLEY, 18T		
63	FU5-6078-000		10	ROLLER, PLATEN		

FIGURE & KEY NO.	PARTS NUMBER	R A N K	Q'TY	DESCRIPTION	SERIAL NUMBER/ REMARKS	S V C
64	FC5-2987-000		1	SHAFT, PAPER READ ROLLER		
65	FC5-2988-000		9	RETAINER, ROLLER		
66	FC5-3021-000		3	SPRING, TORSION		
67	FC5-3024-000		5	SHAFT, PAPER FEEDER ROLLER		
68	FC5-3026-000		2	SPRING, TORSION		
69	FL2-0741-000		5	HOLDER, PAPER FEEDER ROLLER		
70	FU5-6076-000		5	ROLLER, PAPER FEEDER		
71	FM2-1029-000		1	CABLE, REGISTRATION CONNECTING	J1401,1401	
72	FC5-2989-000		4	HOLDER, PAPER DELIVERY ROLLER		
73	FC5-2990-000		1	SHAFT, PAPER DELIVERY ROLLER		
74	FC5-3022-000		4	SPRING, TORSION		
75	FU5-6077-000		4	ROLLER, PAPER DELIVERY		
76	FC5-2978-000		1	GUIDE, REFORM		
77	FC5-2979-000		1	DEFLECTOR, REVERSE		
78	FC5-3020-000		1	SPRING, TORSION		
79	FL2-0742-000		1	GUIDE, PAPER DELIVERY		
80	FU5-2240-000		1	SPRING, COMPRESSION		
81	FM2-1022-000		3	SENSOR PCB UNIT	PI7-9 J201,101,112	
82	FC5-2975-000		1	GUIDE, PAPER FEEDER, 3		
83	FM2-1026-000		1	CABLE, PAPER FEEDER SENSOR	J101,101	
84	FK2-0210-000		1	SOLENOID	SL2 J901	
85	FC5-2967-000		1	CAM, READ ROLLER RELEASE		
86	FK2-0207-000		1	MOTOR, STEPPING, DC	M4 J902	
87	FU5-0329-000		1	GEAR, 31T		
88	FU5-0330-000		1	PULLEY, 40T/GEAR, 20T		
89	VS1-7177-004		2	CONNECTOR, SNAP TIGHT, BK	J101,902	
90	WG8-5593-000		4	PHOTO INTERRUPTER TLP1242	PI1,2,5,6 J1401,102,203,204	
91	XF2-1106-540		1	BELT, TIMING, COGGED		
92	FC5-3149-000		1	FLAG, REGISTRATION SENSOR		
93	FC5-3150-000		1	SPRING, TORSION		
94	FL2-1302-000		1	HOLDER, SEPARATION PAD, 3		
95	FC5-3152-000		1	BLOCK, PRESSURE RELEASE		

FIGURE & KEY NO.	PARTS NUMBER	RANK	Q'TY	DESCRIPTION	SERIAL NUMBER/REMARKS	SVC
96	FU5-2245-000		1	SPRING, COMPRESSION	GOLD	
97	FU5-2251-000		1	SPRING, COMPRESSION	SILVER	
98	FK2-0205-000		1	MOTOR, STEPPING, DC	M2 J8	
99	FU5-2237-000		2	SPRING, TENSION		
100	FM2-1023-000		1	LED PCB UNIT	LED1 J202	
101	FC5-3128-000		1	FLAG, EMPTY SENSOR		
102	FC5-3129-000		1	HOLDER, SENSOR		
103	FC5-3130-000		1	SPRING, TORSION		
104	FC3-0722-000		1	ROLLER, PICK-UP		
105	FC5-3114-000		1	SHAFT, SEPARATION ROLLER		
106	FC5-3115-000		1	ROLLER, SEPARATION		
107	FC5-3116-000		1	SHAFT, PICK-UP ARM		
108	FC5-3118-000		1	ARM, PICK-UP, FRONT		
109	FC5-3119-000		2	BUSHING		
110	FC5-3120-000		2	SPRING, CLUTCH		
111	FC5-3121-000		1	ARM, PICK-UP, REAR		
112	FC5-3124-000		2	SHAFT, PAPER PICK-UP WEIGHT		
113	FL2-1299-000		1	GUIDE, PAPER PICK-UP		
114	FU5-0343-000		2	PULLEY, 18T		
115	FU5-2244-000		1	SPRING, COMPRESSION		
116	XF2-1106-140		1	BELT, TIMING		
117	FC5-3163-000		1	JOINT		
118	FK2-0204-000		1	MOTOR, STEPPING, DC	M1 J11	
119	FU5-0344-000		1	PULLEY, 60T/GEAR, 60T		
120	XF2-1108-560		1	BELT, TIMING		
121	FC5-3165-000		1	JOINT		
122	FC5-3166-000		1	LEVER, SHUTTER		
123	FC5-3167-000		1	SPRING, CLUTCH		
124	FC5-3168-000		1	SPRING, CLUTCH		
125	FC5-3169-000		1	SHAFT, CLUTCH		
126	FC5-3170-000		1	BUSHING		
127	FK2-0209-000		1	CLUTCH, ELECTROMAGNETIC	CL1 J1001	

FIGURE & KEY NO.	PARTS NUMBER	R A N K	Q'TY	DESCRIPTION	SERIAL NUMBER/ REMARKS	S V C
128	FU5-0345-000		1	GEAR, 40T		
129	FK2-0217-000		1	MOTOR, STEPPING, DC	M3 J1002	
130	FU5-0328-000		1	GEAR, 24T		
131	FK2-0208-000		1	FAN	FM1 J12	
132	FC5-3009-000		1	SHAFT, PAPER FEEDER ROLLER		
133	FL2-0747-000		1	GUIDE, OPEN/CLOSE		
134	FU5-2238-000		2	SPRING, COMPRESSION		
135	FU5-6073-000		4	ROLLER, FEED		
136	FC5-3153-000		1	GUIDE, PRESSURE RELEASE		
137	FL2-0748-000		1	HOLDER, SEPARATION PAD, 2		
138	FL2-0749-000		1	HOLDER, SEPARATION PAD, 1		
501	XB1-2300-605		1			
502	XD2-1100-322		1			
503	XD2-1100-402		AR	RING,E		
504	XD2-1100-502		1			
505	XD2-1100-642		AR	RING,E		
506	XB4-7300-805		AR	SCREW,TAPPING,TRUSS HEAD,M3X8		
507	XD2-1100-242		AR	RING,E		
508	XD3-2200-122		AR	PIN,DOWEL		
509	XD3-2200-102		AR	PIN,DOWEL		
510	XB1-1301-209		AR	SCREW,MACH.,PAN HEAD,M3X12		
511	XB4-5400-805		AR	SCREW,P,M4X8		
512	XB6-7300-605		AR	SCREW,TP,M3X6		
513	XB1-2400-607		AR	SCREW,MACH.,TRUSS HEAD,M4X6		

FIGURE P90 ADF CONTROLLER PCB ASSEMBLY

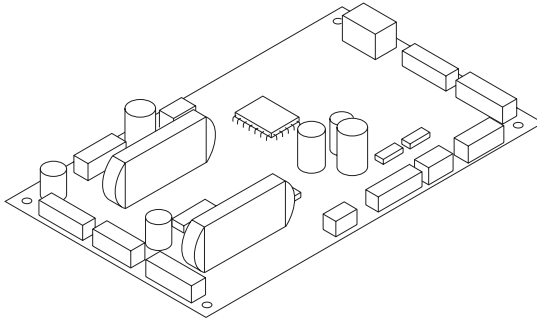


FIGURE & KEY NO.	PARTS NUMBER	R A N K	QTY	DESCRIPTION	SERIAL NUMBER/ REMARKS	S V C
Fig.P90	FM2-1021-000		1	ADF CONTROLLER PCB ASSEMBLY		

FIGURE PB

LIST OF CONNECTORS

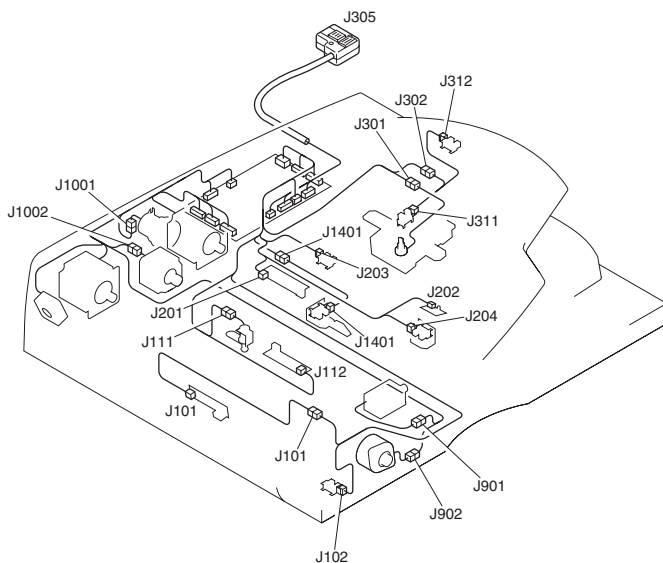


FIGURE & KEY NO.	PARTS NUMBER	RANK	Q'TY	DESCRIPTION	SERIAL NUMBER/REMARKS	SVC
Fig.PB	NPN		RF	LIST OF CONNECTORS		
J1	PCB			DC CONTROLLER		
J1	VS1-6313-008		1	CONNECTOR, 8P, FEMALE		
J1	VS1-6314-008		1	CONNECTOR, 8P, FEMALE		
J1	VT2-5161-016		1	HOLDER, CONNECTOR, 16P		
J2	PCB			DC CONTROLLER		
J2	VS1-6314-012		1	CONNECTOR, 12P, FEMALE		
J3	PCB			DC CONTROLLER		
J3	VS1-5824-009		1	CONNECTOR, 9P, FEMALE		
J3	WS3-5358-000		9	SOCKET CONTACT, 22-26AWG		
J4	PCB			DC CONTROLLER		
J4	VS1-5824-007		1	CONNECTOR, 7P, FEMALE		
J4	WS3-5358-000		7	SOCKET CONTACT, 22-26AWG		
J5	PCB			DC CONTROLLER		
J5	VS1-5824-008		1	CONNECTOR, 8P, FEMALE		
J5	WS3-5358-000		7	SOCKET CONTACT, 22-26AWG		
J6	PCB			DC CONTROLLER		
J6	VS3-5083-002		1	CONNECTOR, 2P, FEMALE		
J6	WS3-5160-000		2	SOCKET CONTACT, 18-24AWG		
J8	PCB			DC CONTROLLER		
J8	NPN			PAPER FEEDER MOTOR	M2	
J9	PCB			DC CONTROLLER		
J9	VS1-7178-006		1	CONNECTOR, 6P, FEMALE, BK		
J10	PCB			DC CONTROLLER		
J10	VS1-7178-008		1	CONNECTOR, 8P, FEMALE, BK		
J11	PCB			DC CONTROLLER		
J11	NPN			PAPER PICK-UP MOTOR	M1	
J12	PCB			DC CONTROLLER		
J12	NPN			COOLING FAN	FM1	
J14	PCB			DC CONTROLLER		
J14	VS1-6314-003		1	CONNECTOR, 3P, MALE		
J101	PCB			PAPER FEEDER SENSOR PCB UNIT	PI8	

FIGURE & KEY NO.	PARTS NUMBER	R A N K	Q'TY	DESCRIPTION	SERIAL NUMBER/ REMARKS	S V C
J101	VS1-6321-004		1	CONNECTOR, 4P, FEMALE		
J101	VS1-7178-004		2	CONNECTOR, 4P, FEMALE, BK		
J101	VS1-7177-004		1	CONNECTOR, SNAP TIGHT, BK		
J102	NPN			RELEASE SENSOR	PI2	
J102	VS1-6321-003		1	CONNECTOR, 3P, FEMALE		
J111	SYS			CANON STAMP UNIT-A1	SL1	
J111	VS1-6321-002		1	CONNECTOR, 2P, FEMALE		
J111	VS1-7177-002		1	CONNECTOR, SNAP TIGHT, BK		
J112	PCB			DELIVERY REVERSE SENSOR PCB	PI9	
J112	VS1-6321-004		1	CONNECTOR, 4P, FEMALE		
J201	PCB			SEPARATION SENSOR PCB UNIT	PI7	
J201	VS1-6321-004		1	CONNECTOR, 4P, FEMALE		
J202	PCB			LED PCB UNIT	LED1	
J202	VS1-6320-003		1	CONNECTOR, 3P, MALE		
J203	NPN			EMPTY SENSOR	PI5	
J203	VS1-6321-003		1	CONNECTOR, 3P, FEMALE		
J204	NPN			SEPARATION SENSOR	PI6	
J204	VS1-6321-003		1	CONNECTOR, 3P, FEMALE		
J301	NPN			VARIABLE RESISTOR	VR1	
J301	VS1-5824-003		1	CONNECTOR, 3P, FEMALE		
J301	WS3-5358-000		3	SOCKET CONTACT, 22-26AWG		
J301	VS1-7177-003		1	CONNECTOR, SNAP TIGHT, BK		
J302	VS1-5824-006		1	CONNECTOR, 6P, FEMALE		
J302	VS1-7178-006		1	CONNECTOR, 6P, FEMALE, BK		
J302	WS3-5358-000		6	SOCKET CONTACT, 22-26AWG		
J302	VS1-7177-006		1	CONNECTOR, SNAP TIGHT, BK		
J305	SYS			TO COPIER		
J305	FK2-0213-000		1	COVER, PLUG, A		
J305	FH2-6483-000		1	COVER, PLUG, B		
J305	FK2-0214-000		1	CLAMP, CABLE		
J305	VS3-5080-007		1	CONNECTOR, 7P, FEMALE		
J305	VS3-5080-008		1	CONNECTOR, 8P, MALE		

FIGURE & KEY NO.	PARTS NUMBER	RANK	Q'TY	DESCRIPTION	SERIAL NUMBER/REMARKS	SVC
J305	WT1-5155-000		14	TERMINAL		
J305	FK2-0212-000		1	HOUSING		
J305	WS3-5044-000		3	SOCKET, CONTACT, 18-24AWG		
J311	NPN			A4/LT SENSOR	PI3	
J311	VS1-7178-003		1	CONNECTOR, 3P, FEMALE, BK		
J312	NPN			LG/LD SENSOR	PI4	
J312	VS1-0852-003		1	CONNECTOR, 3P, FEMALE		
J901	NPN			RELEASE SOLENOID	SL2	
J901	VS1-7178-002		1	CONNECTOR, 2P, FEMALE, BK		
J901	VS1-7176-002		1	CONNECTOR, SNAP TIGHT, BK		
J902	NPN			RELEASE MOTOR	M4	
J902	VS1-7178-004		1	CONNECTOR, 4P, FEMALE, BK		
J902	VS1-7177-004		1	CONNECTOR, SNAP TIGHT, BK		
J1001	NPN			PAPER FEEDER CLUTCH	CL1	
J1001	VS1-7178-002		1	CONNECTOR, 2P, FEMALE, BK		
J1001	VS1-7177-002		1	CONNECTOR, SNAP TIGHT, BK		
J1002	NPN			PAPER DELIVERY REVERSE	M3	
J1002	VS1-7178-006		1	CONNECTOR, 6P, FEMALE, BK		
J1002	VS1-7177-006		1	CONNECTOR, SNAP TIGHT, BK		
J1401	NPN			REGISTRATION SENSOR	PI1	
J1401	VS1-6321-003		1	CONNECTOR, 3P, FEMALE		
J1401	VS1-7178-003		2	CONNECTOR, 3P, FEMALE, BK		
J1401	VS1-7177-003		1	CONNECTOR, SNAP TIGHT, BK		

Prepared by
OFFICE IMAGING PRODUCTS QUALITY ASSURANCE CENTER
CANON INC.

Canon